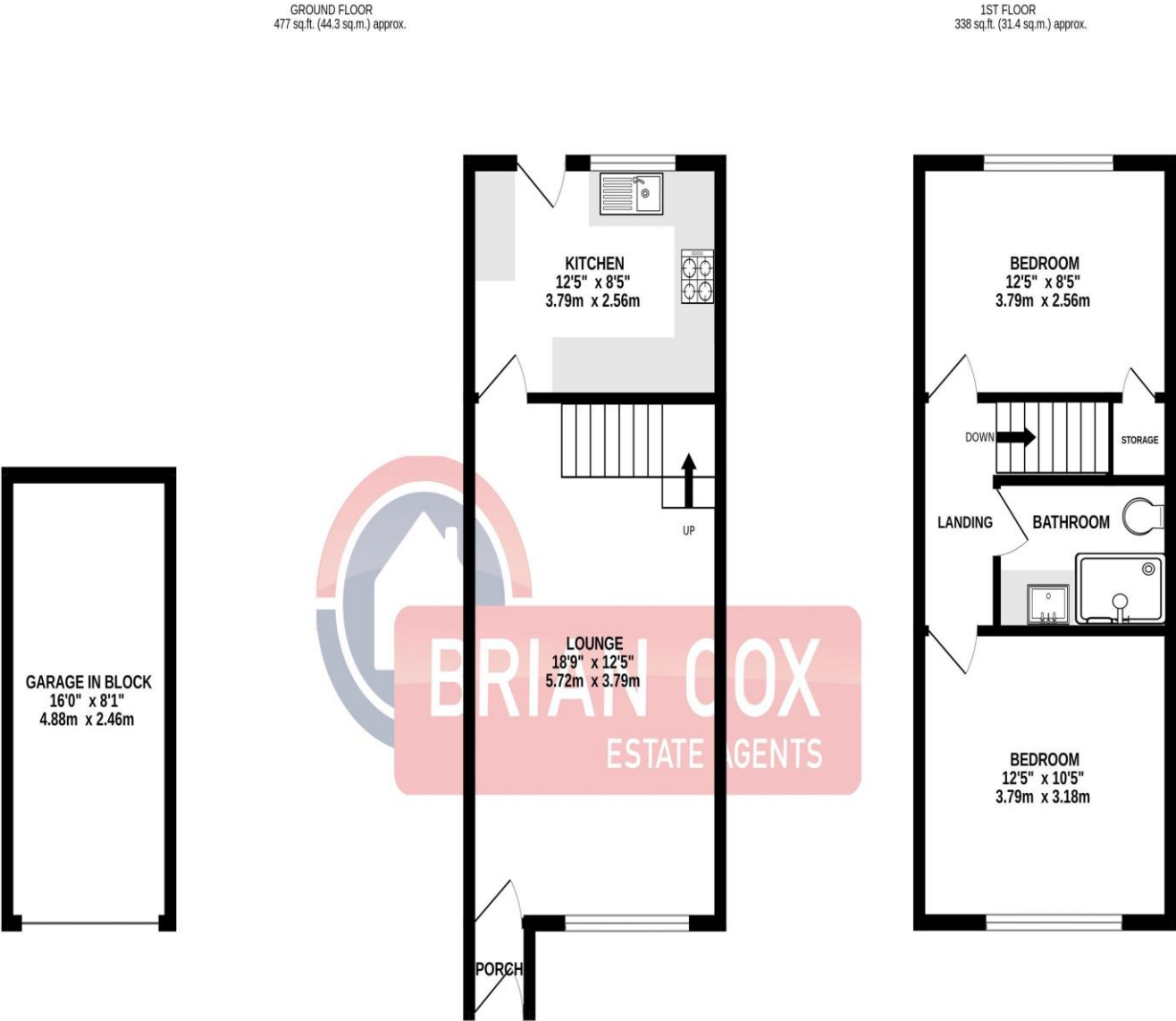


the floorplan...



TOTAL FLOOR AREA : 814 sq.ft. (75.6 sq.m.) approx.

Whilst every attempt has been made to ensure the accuracy of the floorplan contained here, measurements of doors, windows, rooms and any other items are approximate and no responsibility is taken for any error, omission or mis-statement. This plan is for illustrative purposes only and should be used as such by any prospective purchaser. The services, systems and appliances shown have not been tested and no guarantee as to their operability or efficiency can be given.
Made with Metropix ©2025

more details from...

call: **Brian Cox Greenford: 0208 578 1004**
email: **emma.gerald@brian-cox.co.uk**
web: **www.brian-cox.co.uk**



Consumer Protection from Unfair Trading Regulations 2008 We have not tested any apparatus, equipment, fixtures, fittings or services and so cannot verify that they are in working order or fit for purpose. You are advised to obtain verification from your solicitor or surveyor. References to the tenure of a property are based on information supplied by the seller. We have not had sight of the title documents and a buyer is advised to obtain verification from their solicitor. Items shown in photographs are not included unless specifically mentioned within the sales particulars, but may be available by separate negotiation. We advise you to book an appointment to view before embarking on any journey to see a property, and check its availability.



0208 578 1004
brian-cox.co.uk



Brian Cox and Company are delighted to bring to the market this beautifully presented two-bedroom terraced freehold family home that has been thoughtfully refurbished by the current owner to a high standard, offering stylish and modern living throughout. With landscaped front and rear gardens, as well as a private garage, this property is perfect for first-time buyers, young families, or those looking to downsize without compromising on quality or space. Located within easy reach of Greenford's excellent transport links, local amenities, and well-regarded schools, this ready to move-in home combines comfort, convenience, and contemporary style in a sought-after location.



£465,000
Freehold

Dacre Close, Greenford, UB6 9UQ



in brief...

- Two Double Bedroom
- Terraced House
- Freehold
- Immaculate Condition Throughout
- Garage
- Stylish, fully refurbished modern bathroom featuring spa-inspired lighting, a walk-in shower with recessed shelving, and premium VOS taps and fixtures



the location...

nearest stations ...

Greenford (0.7 miles)
Northolt (0.8 miles)
South Greenford (1.0 miles)

Greenford is a large suburb in the London Borough of Ealing in West London, UK. It was an ancient parish in the historic county of Middlesex. It is 11 miles (18 km) from Charing Cross in Central London. The Northolt and Greenford Countryside Park (NGCP) links 110 hectares of open space in the North West of the borough.

It is crossed by the A40 running from West to East into Central London and by the Grand Union Canal running from North to South. There are good walking and cycle routes throughout the park providing useful connections between sites.

There are several local schools in the area which include Coston Primary School, Edward Betham Church of England Primary School, Ravenor Primary School and Oldfield Primary School which all have a good or higher Ofsted report.

